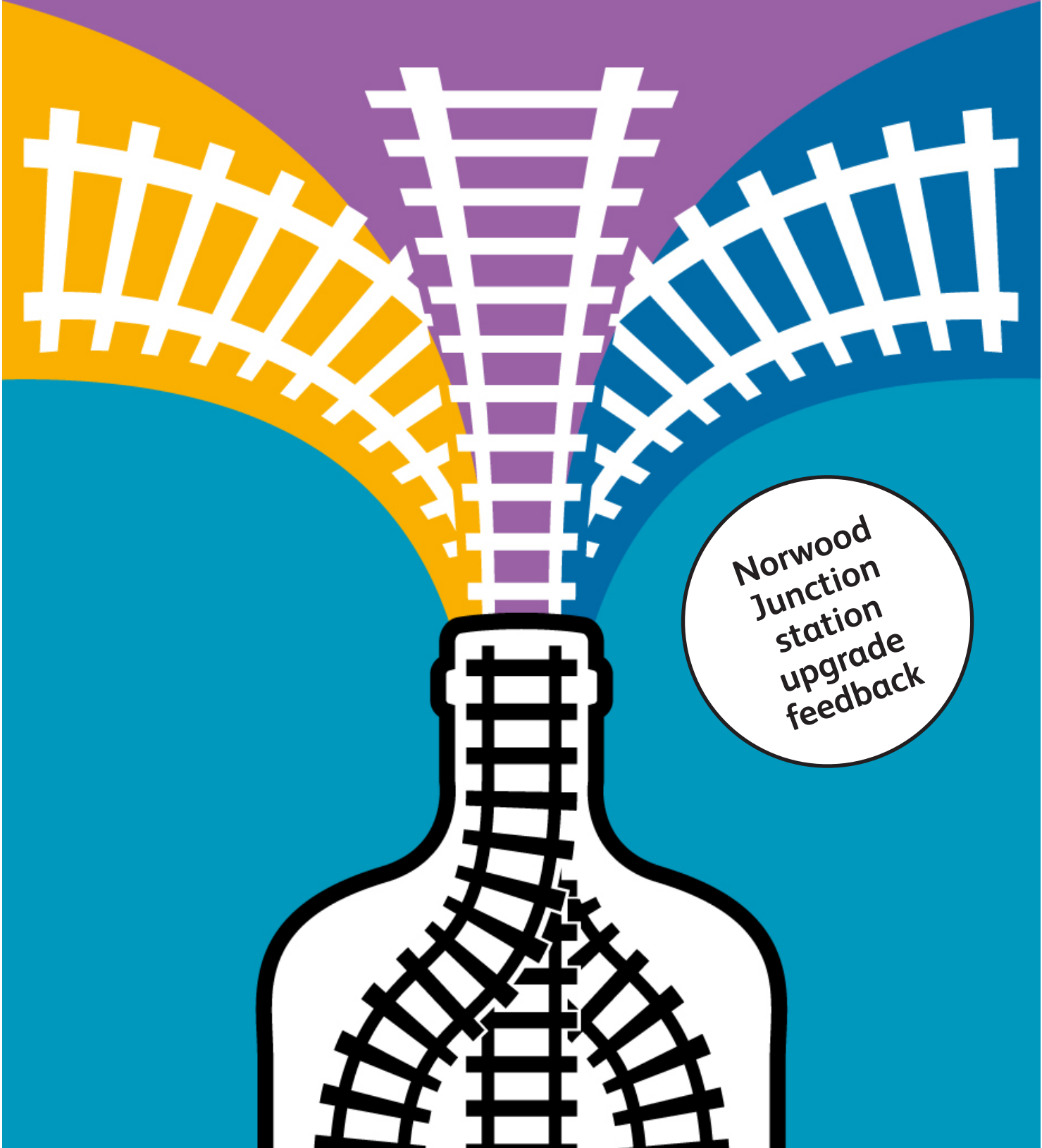
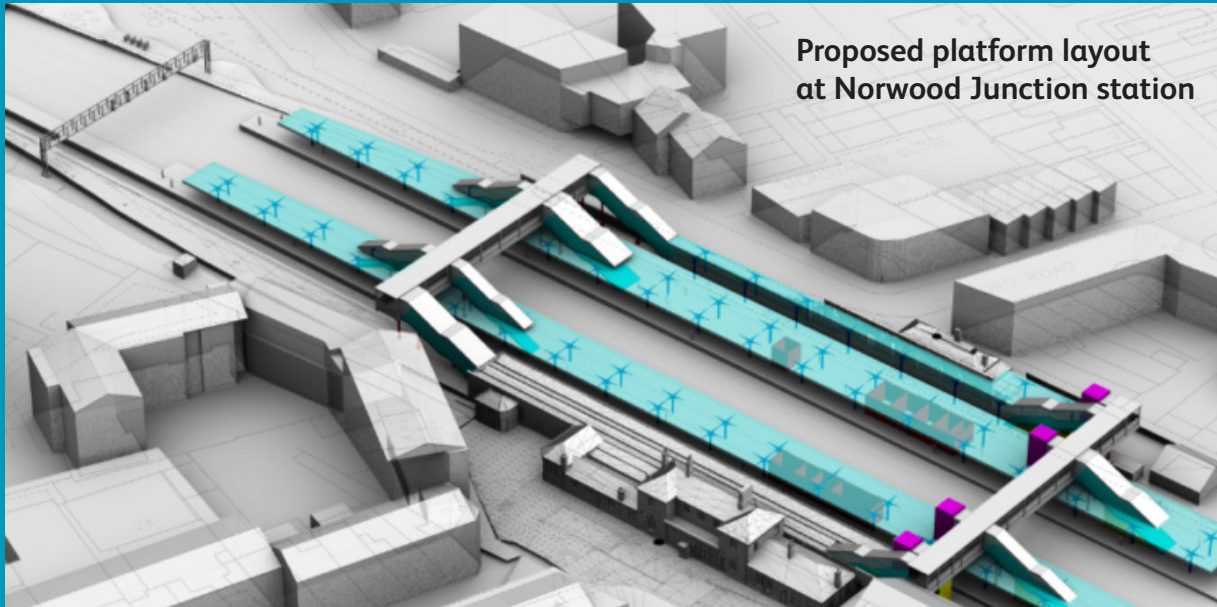


Unblocking the Croydon bottleneck



Norwood
Junction
station
upgrade
feedback

Our proposal



Network Rail is proposing to upgrade Norwood Junction station to provide more frequent and reliable services, as well as a modern, accessible station fit for the 21st Century.

The proposals are a key part of our long-term plans to unblock the railway bottleneck in the Croydon area to run more reliable and more frequent services on the Brighton Main Line and its branch lines. Our proposal will:

Improve track layout

Modify the existing track layout to provide dedicated tracks for fast and non-stopping services and dedicated island platforms for north and south bound services, allowing more trains to run through and stop at the station.

Lengthen and widen platforms

Build wider and longer platforms to allow full length 12-car trains to stop at the station for the first time and reconfigure the platform layout to provide dedicated platforms for northbound and southbound services.

Upgrade signalling

Signalling upgrades would allow more trains to run through the station and help signallers recover the service more quickly when delays occur.

Improve accessibility

Two new footbridges, one with lifts, would provide step-free access to platforms for the first time.

Overwhelming support

In June 2019, we held four public events to share information about the development proposals and give the public an opportunity to share their views. The proposals were also available to view and comment on online.

Our proposals received overwhelming support from passengers, residents and businesses in the area.

Your feedback



“Having step-free access would make a huge difference for me as I have small children and mobility issues.”

Local station user

“I’ve long supported this important upgrade that I know will be of great help to the thousands of people who use Norwood Junction station every day. Investment in improving accessibility at this vital transport hub is particularly welcome and I look forward to the positive impact that the completion of this project will have for residents.”

Sarah Jones, Member of Parliament for Croydon Central

94% of people who responded either agreed or strongly agreed with the proposals

Frequently asked questions

How can you increase services with fewer platforms?

The current track and platform arrangements limit the number of fast services able to call at Norwood Junction. This is because stopping and non-stopping services share the same tracks.

The proposed track and platform layouts provide separate tracks for non-stopping and stopping services, allowing trains to stop at Norwood Junction while others overtake on dedicated through lines. This would allow more trains to stop at Norwood Junction without reducing the total number of trains able to run between East Croydon and London Bridge.

Will passengers face disruption during the works?

To build the proposals we would construct one new platform at a time, ensuring the remaining platforms remained in service. Once a new platform is complete, that would come into service and work would start on the next new platform. This approach would allow us to run as full a service as possible during construction.

Will passengers have direct access to platform 1?

Our proposed solution would allow us to construct the station more efficiently. Interchange between services would also be quicker and easier. All northbound trains would call at a single platform island, as would all southbound trains.

Retaining platform 1 would mean significant works would be needed to the current canopies and associated support columns. This is to meet accessibility requirements and allow wheelchair access to all trains doors. Taking platform 1 out of use would allow all structures to be retained as part of an expanded concourse area.

Can we keep the subway as well as the footbridge?

The current subway is in a poor condition, does not meet modern requirements and would be costly to maintain. The staircases are too narrow and the cost of widening these would not be cost effective. In order to provide a safe and secure route for passengers, footbridges and lifts built to modern standards would be installed.

In addition to the concerns raised, several suggestions were made some of which will be considered at the next design stage. These suggestions included:

- Installing drinking water fountains
- Weather proofing the footbridge and stairs
- Sheltered waiting rooms
- Expanded gatelines

“ We are supportive of Network Rail’s efforts to improve their service for our residents and I’m pleased to see so many people engaging with the survey. Improvements to the station layout and tracks are essential if we are to offer residents a more reliable and inclusive service, including more stopping services at Norwood Junction. ”

Councillor Stuart King, Cabinet Member for Environment, Transport and Regeneration

“ These improvements are much needed given the size of the station and the growing community around Norwood Junction that uses the station. ”

Local station user

“ I’m delighted Norwood Junction is at long last getting the investment it needs. Everyone living locally will welcome the improved public transport links to the rest of London and beyond. Disabled passengers and mums with pushchairs have long campaigned for the station to become step-free so I’m particularly excited this will now happen. ”

Steve Reed, Member of Parliament for Croydon North

“ It’s fantastic news that Norwood Junction is getting the upgrade that it needs and that local residents deserve. A great many people have been campaigning for these changes for a long time and they will welcome this crucial part of improving reliability and increasing capacity of the train network in Croydon. ”

Steve O’Connell, London Assembly Member for Croydon

What’s next

We will continue working on the designs for Norwood Junction station. We will use your feedback to help inform our decisions.

The wider work to unblock the Croydon bottleneck will also continue. Further consultations will be held in summer 2020.

Get in touch

For more information about our proposals for Norwood Junction station, visit networkrail.co.uk/norwoodjunction or you can email us at consultation@cars2.networkrail.co.uk.