

We will write to you when overnight disruption is expected near your property, noting which type of work you can expect. We recommend keeping this leaflet handy so you can refer back to it.

Any questions?

If you would like any additional information in relation to our surveying work, or any other Network Rail issue, please visit:

www.networkrail.co.uk/contact

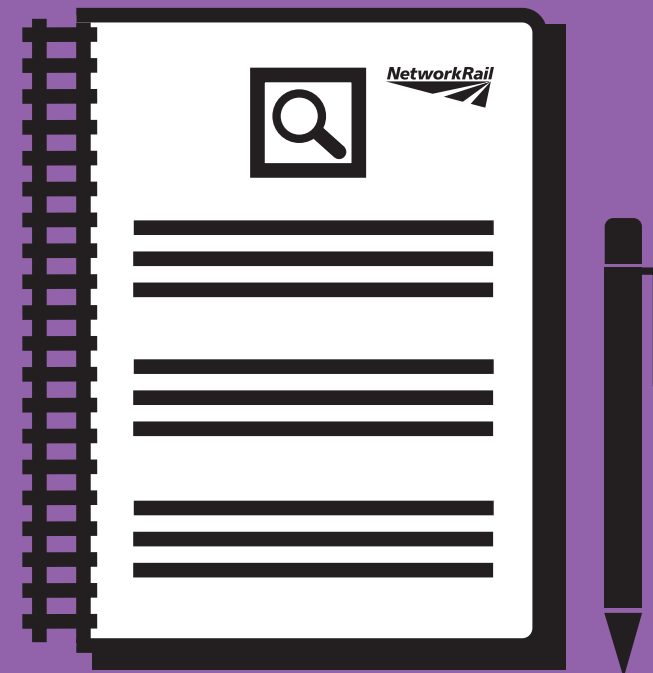
Alternatively, you can telephone our 24hr National Helpline on 03457 11 41 41



Railway assessment work

Work is due to begin near your property in preparation for proposed upgrades to the Transpennine Railway between York and Manchester

Find out more at networkrail.co.uk/transpennine



What are the assessments for?

In conjunction with the Department for Transport, we're developing proposals to improve the Transpennine Railway between Manchester, Huddersfield, Leeds and York. We want to create a better performing railway that passengers can depend on with more seats, more trains and faster journeys.

To help us with our designs we need to gather lots of information and data about the railway, meaning our teams will be examining everything from the condition of bridges and tunnels, to checking for utilities and services under the track.

When will work start?

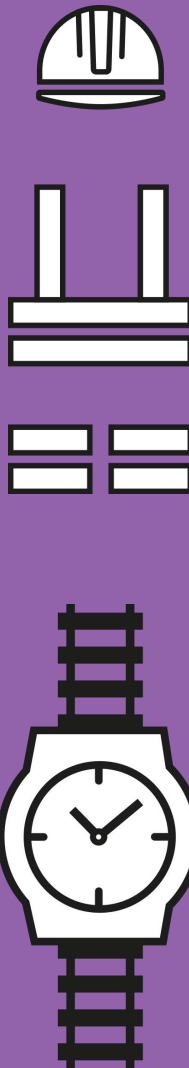
Our specialists will begin working in November, starting on the section of the route between Leeds and Manchester Victoria. Work will then continue through till April 2021.

Some of our work can be done safely during daytime hours, keeping disruption to the community to a minimum; however, a proportion of our work will have to be done at night, while no trains are running.

Our overnight shifts will be primarily at weekends, when there are fewer trains running late into the evening. Usually our teams will work from 23:00 – 07:00 from Saturday night through to Sunday morning.

Will work be noisy?

Although there will be a degree of noise, most of our work will not cause any disturbance to residents. Nor should communities expect work in their area on a regular basis, as our teams will be covering a large geography each shift.



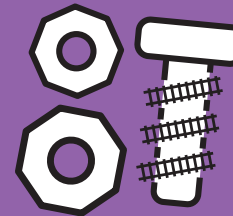
Different assessment methods

Observation



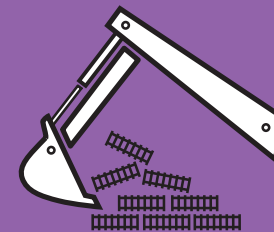
Expected disruption to the community: Low
Observation assessment will involve small teams of railway workers making visual examinations and collecting data, without the use of tools. Workers are likely to use torches and low-level lighting to facilitate their examinations.

Engineering



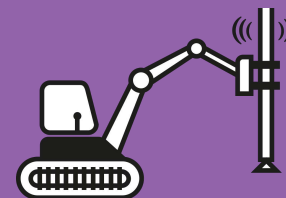
Expected disruption to the community: Low – Medium
Engineering assessment teams will utilise specialist measurement equipment to collect information and data. Machinery for this work can usually be carried by hand and will not require the use of vehicles. Workers may use small generators to power lighting while carrying out this work.

Site Preparation



Expected disruption to the community: Medium – High
This work may include: vegetation management, delivery of materials, erecting scaffolding, and building temporary fencing. Work will usually be undertaken by small teams working from vans and 4x4 vehicles, often using plant and machinery such as excavators and small cranes.

Coring



Expected disruption to the community: High
Coring assessment will involve using a drilling rig to take samples of structures, track beds, or ballast (the stones under the track). Sometimes, this work will mean building scaffolding around bridges and structures. Due to the nature of this work, our teams will be using loud drilling machinery, hand held power-tools, and lighting powered by generators.